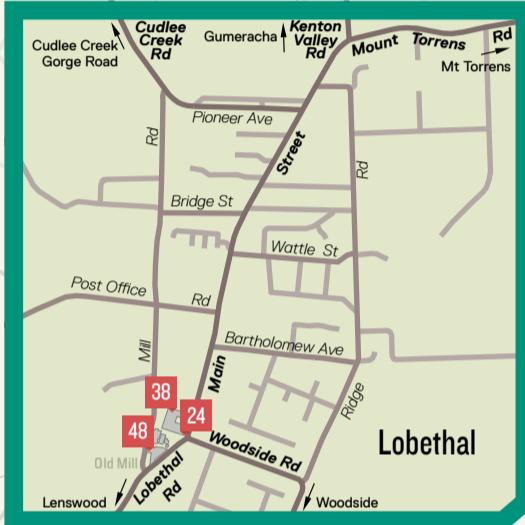
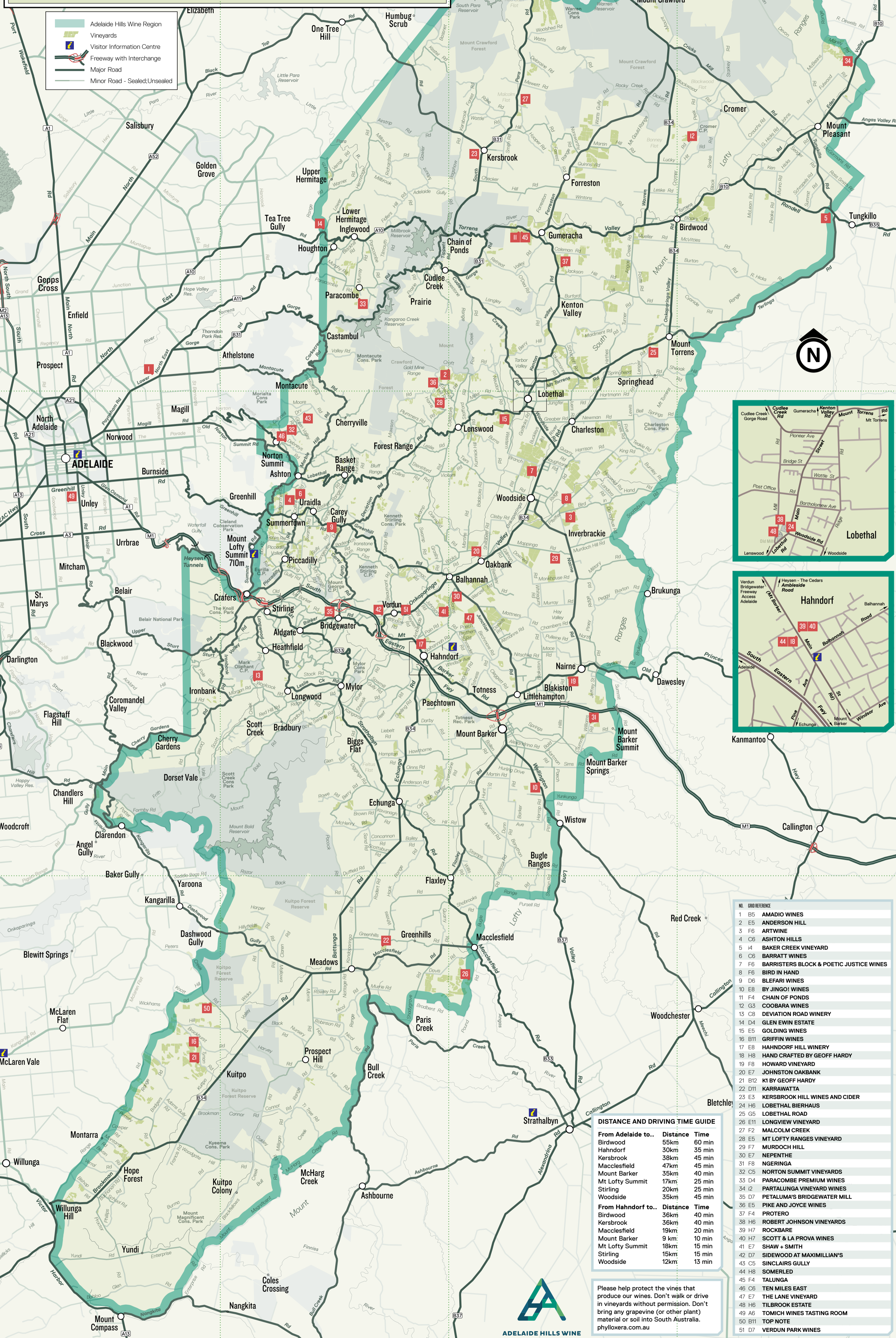


© Adelaide Hills Wine, 2014. Produced by: Carto Graphics, Unley, South Australia  
 Adelaide Hills Wine Region gratefully acknowledge the assistance of  
 "Phylloxera and Grape Industry Board of South Australia"

Adelaide Hills Wine Region  
 Vineyards  
 Visitor Information Centre  
 Freeway with Interchange  
 Major Road  
 Minor Road - Sealed/Unsealed



**DISTANCE AND DRIVING TIME GUIDE**

From Adelaide to..	Distance	Time
Birdwood	55km	60 min
Hahndorf	30km	35 min
Kersbrook	38km	45 min
Macclesfield	47km	45 min
Mount Barker	35km	40 min
Mt Lofty Summit	17km	25 min
Stirling	20km	25 min
Woodside	35km	45 min

From Hahndorf to..	Distance	Time
Birdwood	36km	40 min
Kersbrook	36km	40 min
Macclesfield	19km	20 min
Mount Barker	9 km	10 min
Mt Lofty Summit	18km	15 min
Stirling	15km	15 min
Woodside	12km	13 min

**NO. GRID REFERENCE**

1 B5	AMADIO WINES
2 E5	ANDERSON HILL
3 F6	ARTWINE
4 C6	ASHTON HILLS
5 D4	BAKER CREEK VINEYARD
6 C6	BARRATT WINES
7 F6	BARRISTERS BLOCK & POETIC JUSTICE WINES
8 F6	BIRD IN HAND
9 D6	BLEFARI WINES
10 E8	BY JINGO! WINES
11 F4	CHAIN OF PONDS
12 G3	COOBARA WINES
13 C8	DEVIATION ROAD WINERY
14 D4	GLEN EWIN ESTATE
15 E5	GOLDING WINES
16 B11	GRIFFIN WINES
17 E8	HAHNDORF HILL WINERY
18 H8	HAND CRAFTED BY GEOFF HARDY
19 F8	HOWARD VINEYARD
20 E7	JOHNSTON OAKBANK
21 B12	KI BY GEOFF HARDY
22 D11	KARRAWATTA
23 E3	KERSBROOK HILL WINES AND CIDER
24 H6	LOBETHAL BIERHAUS
25 G5	LOBETHAL ROAD
26 E11	LONGVIEW VINEYARD
27 F2	MALCOLM CREEK
28 E5	MT LOFTY RANGES VINEYARD
29 F7	MURDOCH HILL
30 E7	NEPENTHE
31 F8	NGERINGA
32 C5	NORTON SUMMIT VINEYARDS
33 D4	PARACOMBE PREMIUM WINES
34 I2	PARTALUNGA VINEYARD WINES
35 D7	PETALUMA'S BRIDGEWATER MILL
36 E5	PIKE AND JOYCE WINES
37 F4	PROTERO
38 H6	ROBERT JOHNSON VINEYARDS
39 H7	ROCKBARE
40 H7	SCOTT & LA PROVA WINES
41 E7	SHAW + SMITH
42 D7	SIDEWOOD AT MAXIMILLIAN'S
43 C5	SINCLAIRS GULLY
44 H8	SOMERLED
45 F4	TALUNGA
46 E6	TEN MILES EAST
47 C7	THE LANE VINEYARD
48 H6	TILBROOK ESTATE
49 A6	TOMICH WINES TASTING ROOM
50 B11	TOP NOTE
51 D7	VERDUN PARK WINES

Please help protect the vines that produce our wines. Don't walk or drive in vineyards without permission. Don't bring any grapevine (or other plant) material or soil into South Australia.  
 phylloxera.com.au

